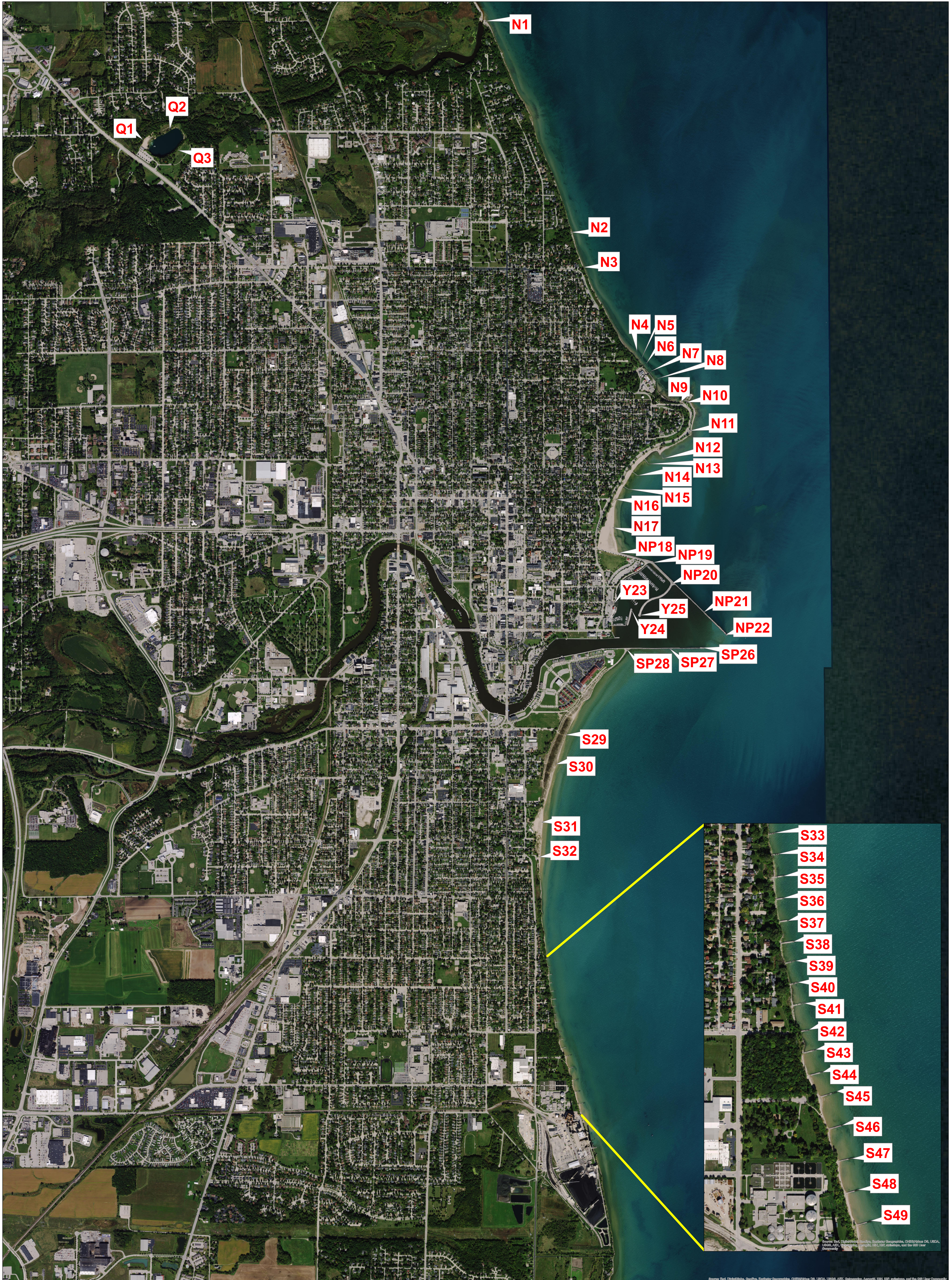


**\*\*\*ATTACHMENTS\*\*\***



**911**

**EMERGENCY**

**LOCATION**

**N1**

911

EMERGENCY

LOCATION

N1

4.5

18"

1.75

18"

1.75

6"

4"

12"

*From the 2009 report*

After deliberation of the wide variety of issues related to Lake Michigan water safety, the group formed consensus on the following assumptions.

1. Lake Michigan is a wondrous natural feature that attracts residents and a variety of recreational users. The City of Sheboygan has invested in venues to enhance the use of the lake, with the use comes inherent risks. It is the goal of the Task Force to develop strategies to reduce the risks of water front drowning.
2. The degree of drowning hazard varies with weather conditions and locations. The biggest problem exists when warm temperatures bring people to swim and the prevailing wind and hydrographic of the beach and pier structures **along with the rise in lake level** combine to create RIP currents.
3. The most significant RIP currents for swimmers exist in the area of the power plant and North Pier.
4. There are a number of local resources that provide first response for water emergencies (U.S. Coast Guard, Police Department, Fire Department and Sheriff's Department), and other resources available for extended search/recovery. It is the role of the Task Group to recommend strategies that best interface with the professional services.
5. Lack of specific site location information delays water front emergency responses.
6. Barriers and legal restrictions would have minimal effect because of difficulty implementing and enforcing them; and they may conflict with recreational users who are generally competent in the local waters.
7. Regulation may be useful to enhance and reinforce informational programs.
8. There are existing venues that can be utilized to enhance lakefront safety training for youth.
9. A signification public awareness campaign in needed to draw attention to Sheboygan's Lakefront hazards (multi-media).
10. A real time warning/education system should be established at the beach front (flag system, information signs, etc.).
11. An on-site emergency communication system should be established (call boxes, etc).
12. An enhancement/modernization of the life-rings program should be considered.
13. A traditional family swimming area, with life guards watching over a defined beach area, would not address the most critical safety issues.

Based on these assumptions the Task Group developed the following work elements:

- Develop a public educational program including annual awareness campaigns and use existing venues to educate.
- Develop a waterfront warning system including risk information and a real time warning/information system.
- Develop an incident system providing communication with emergency responders and availability of life saving devices.
- Enhance regulations to support risk reduction efforts.