

**\*\*\*ATTACHMENTS\*\*\***



# Water Safety PDT



Sheboygan, WI  
September 2016



# Detroit District

- 91 Harbors
- 99 miles of structures
- 611 miles of channels
- 3,200 miles of coastline

















**Warning**

Surface Uneven  
and Slippery  
When Wet

**Caution**

Waves Flood Surface  
During Storms and  
Rough Seas

**EMERGENCY**  
CALL BOX 8  
101 West Street



# Headlines

GRAND  
HAVEN

TRIBUNE

COOL  
Details on page

© 1994 Grand Haven Publishing

GRAND HAVEN, MICHIGAN-49417- Saturday, October 28, 1995

24 PAGES 3

## Man drowns when large wave knocks him off pier

### Friends' rescue attempts fail

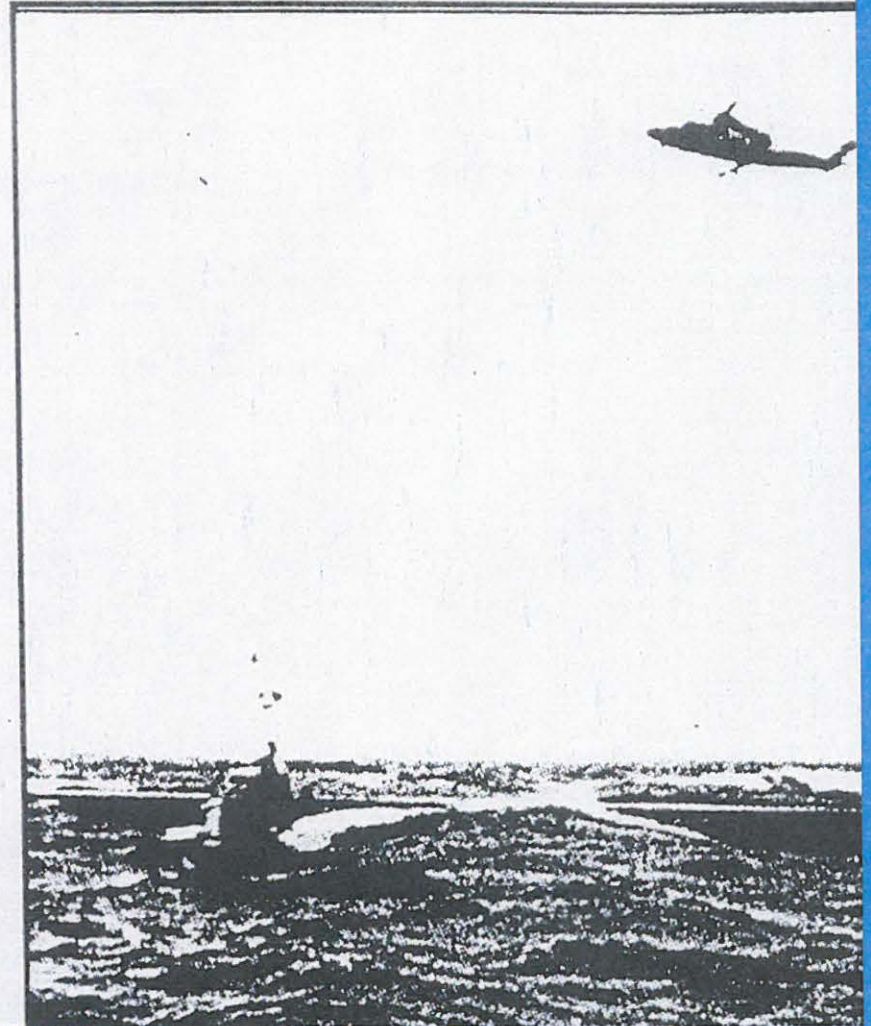
By Mickey Ciokajio  
Tribune writer


A visit to Grand Haven turned tragic Friday afternoon when a 29-year-old man drowned after a giant wave tossed him from the South Pier.

Two friends dove in to save Eugene Victor Grochowski of Delton when he was washed in at 3:25 p.m. but 52-degree water and 8-foot waves prevented them from pulling him to safety, said Richard Szczepanek, deputy director of the Department of Public Safety.

Roger Smith, of Kalamazoo, and 28-year-old Plainwell resident Mark Colwell managed to get back on the pier and were treated for hypothermia at North Ottawa Community Hospital. They were released Friday evening.

THE DROWNING is the first off the pier since new signs advising



A large, light-colored stone monument stands on a concrete pier. The monument is composed of two parts: a rectangular base and a taller, irregularly shaped top section. The top section is inscribed with two lines of text. The background shows a body of water, a blue metal railing, and some buildings in the distance under a clear blue sky.

IN MEMORY OF  
LIVES LOST  
OFF THESE PIERS.

IN HONOR OF  
THOSE WHO TRIED  
TO SAVE THEM.



# Pier Safety

## What is USACE doing?

- Report accidents on our structures
- Identify potential safety hazards (slipping, tripping, etc.)
- Provide appropriate warning signs
- Educate the public
  - Beach & Pier Safety Video & Brochure
  - Swimming, Jumping, Storm Press Releases



# Identify Safety Hazards

Standard  
Pier  
Walkway  
Markings





# Identify Safety Hazards






# Warning Signs





# Warning Signs





**CAUTION**

THIS STRUCTURE PROTECTS NAVIGATION  
INSURE YOUR SAFETY-USE WITH CAUTION  
KEEP OFF DURING STORMS  
OR HIGH SEAS

CORPS OF ENGINEERS U.S. ARMY DETROIT DISTRICT

SLIPPING - TRIPPING  
HAZARDS PRESENT



# Warning Signs

## Spanish Signs





# Warning Signs





# Education

BEACH & PIER SAFETY  
PRESENTS  
*Respect the Power*

Remember when you walk these piers, when you venture into these waters to swim or surf, you are in the midst of a force you cannot reckon with.. you can only arm yourself with the knowledge of how to avoid becoming a victim of its power.

DVD ver. 5a

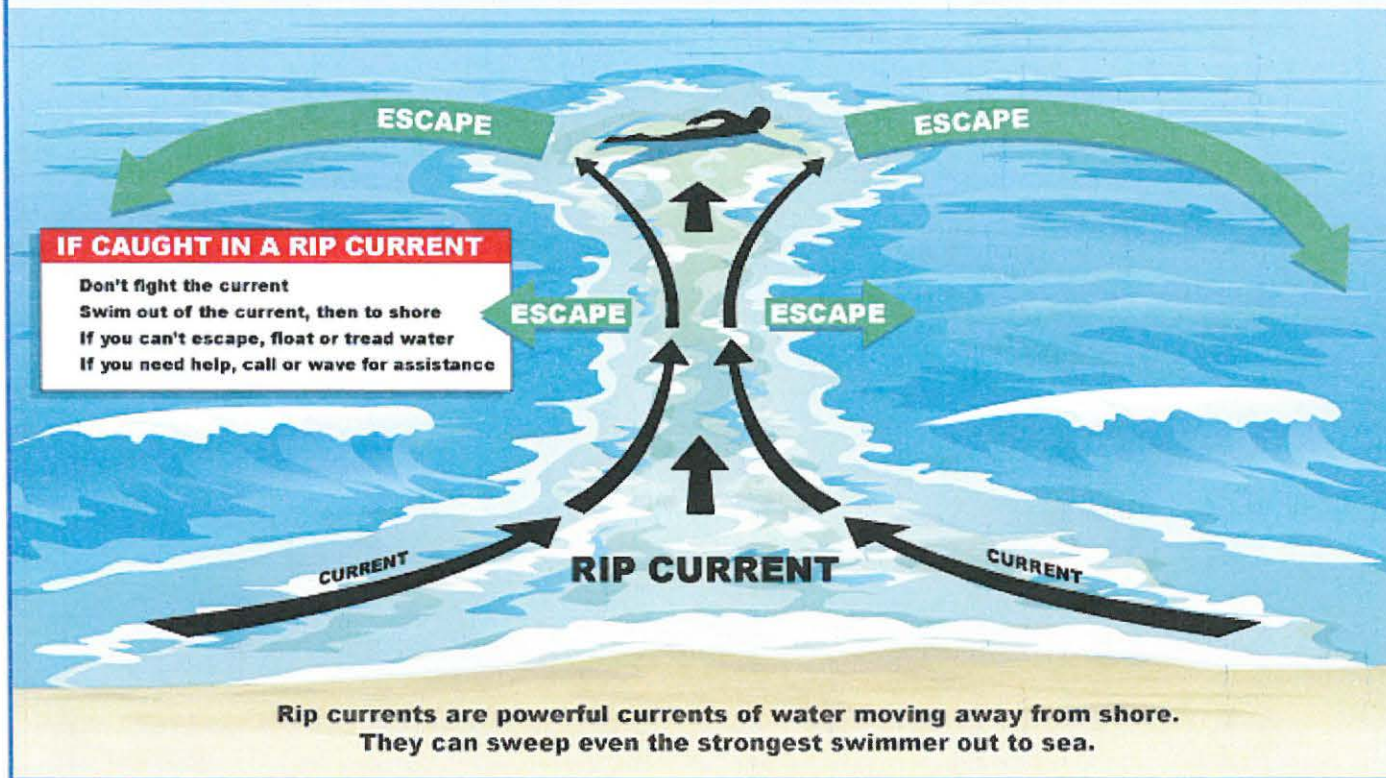


**RIP CURRENTS!**

**BREAK THE GRIP OF THE RIP**

**RIP**™

# RIP CURRENTS **Break the Grip of the Rip!**



## Signs & Posters

# *Pier Safety:* A matter of life or death

## *A few suggested safety precautions...*

- Closely supervise your children.
- Life jackets should be worn by young children and non-swimmers.
- Do not dive off of or swim around pier structures.
- Stay off piers during high winds or when waves are washing over.
- Avoid walking upon wet, slippery areas.
- Do not get close to the edge.
- Do not run or climb upon pier structures.
- Local ordinances may prohibit swimming in navigational channels.

*Sponsored by:*

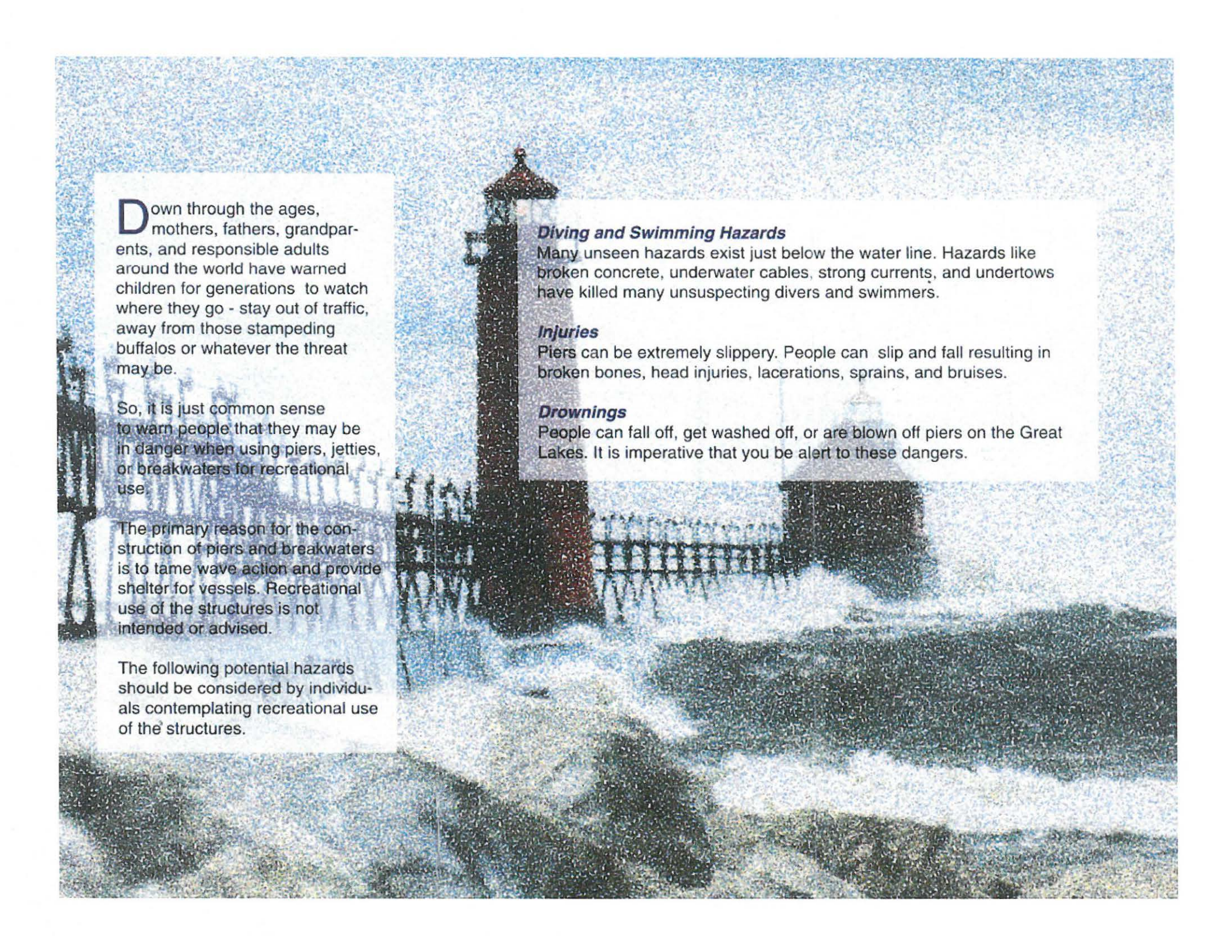


**US Army Corps  
of Engineers**  
Detroit District



Grand Haven Area Public Schools

*Photograph by  
Peggy Ray*



**D**own through the ages, mothers, fathers, grandparents, and responsible adults around the world have warned children for generations to watch where they go - stay out of traffic, away from those stampeding buffalos or whatever the threat may be.

So, it is just common sense to warn people that they may be in danger when using piers, jetties, or breakwaters for recreational use.

The primary reason for the construction of piers and breakwaters is to tame wave action and provide shelter for vessels. Recreational use of the structures is not intended or advised.

The following potential hazards should be considered by individuals contemplating recreational use of the structures.

#### ***Diving and Swimming Hazards***

Many unseen hazards exist just below the water line. Hazards like broken concrete, underwater cables, strong currents, and undertows have killed many unsuspecting divers and swimmers.

#### ***Injuries***

Piers can be extremely slippery. People can slip and fall resulting in broken bones, head injuries, lacerations, sprains, and bruises.

#### ***Drownings***

People can fall off, get washed off, or are blown off piers on the Great Lakes. It is imperative that you be alert to these dangers.



# Safety Features

## Harbors Within Grand Haven Area Office Boundary

- 18 Harbors Total
- 2 equipped with call boxes
- 4 equipped with life rings
- 15 equipped with safety egress ladders
- 13 equipped with safety railing



# Safety Ladder





# Safety Railing





# Pier Safety

## Where is it working?

- **White Lake**
  - Electronic trip devices when ring is taken
- **Frankfort**
  - Pier Safety Education Deck: Call box (wireless phone), Memorial, Lifesaving Instructions
  - Life rings & Throw Ropes
- **Grand Haven**
  - Emergency call box (wireless phone) and beacon
  - Memorial Stone on South pier @ shoreline
  - Life Rings and Throw Ropes
- **St. Joseph Harbor** – Call boxes installed by City
- **Manistee** – Life rings and throw ropes
- **Michigan City, IN** -- Life rings in alarmed boxes



# Frankfort Harbor, MI

## EMERGENCY CALL BOX & LIFE RINGS





## PIER SAFETY GUIDELINES

- This is not public property, proceed at your own risk.
- Use caution if pier is wet or slippery, especially if waves wash over the pier or if storm conditions exist.
- Please, no bikes or skates.
- Use strollers & wheelchairs with caution.
- Diving or jumping from pier is not advised.

## LIFESAVING DEVICES



### FLOATATION RING

REMOVE RING FROM THE HOLDER.  
Toss beside victim  
in the water.

### THROW ROPE

CAN BE THROWN TO VICTIM, ALONG WITH  
FLOATATION RING, OR USED AS A LIFELINE TO  
RESCUE AN UNCONSCIOUS VICTIM. DO NOT  
ATTEMPT TO PULL THE VICTIM BACK TO  
THE PIER, CALL FOR EMERGENCY SUPPORT.



### CALL PHONE

FOR EMERGENCY PURPOSES ONLY.  
LIFT THE RECEIVER FOR EMERGENCY 911.  
POLICE & COAST GUARD WILL BE NOTIFIED  
IMMEDIATELY.

PLEASE REPORT MIS-USE OR MISSING EQUIPMENT  
TO THE FRANKFORT POLICE DEPT.

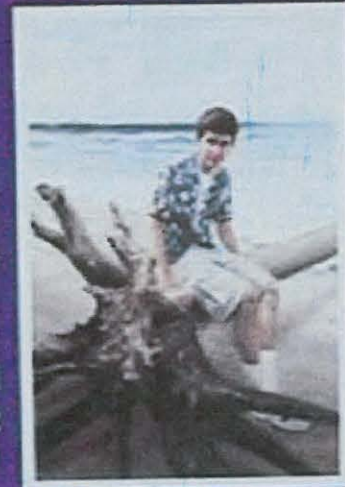
THIS EQUIPMENT WILL BE REMOVED DURING THE WINTER.

## OF CALEB SUTTER

### THE PIER SAFETY PROJECT

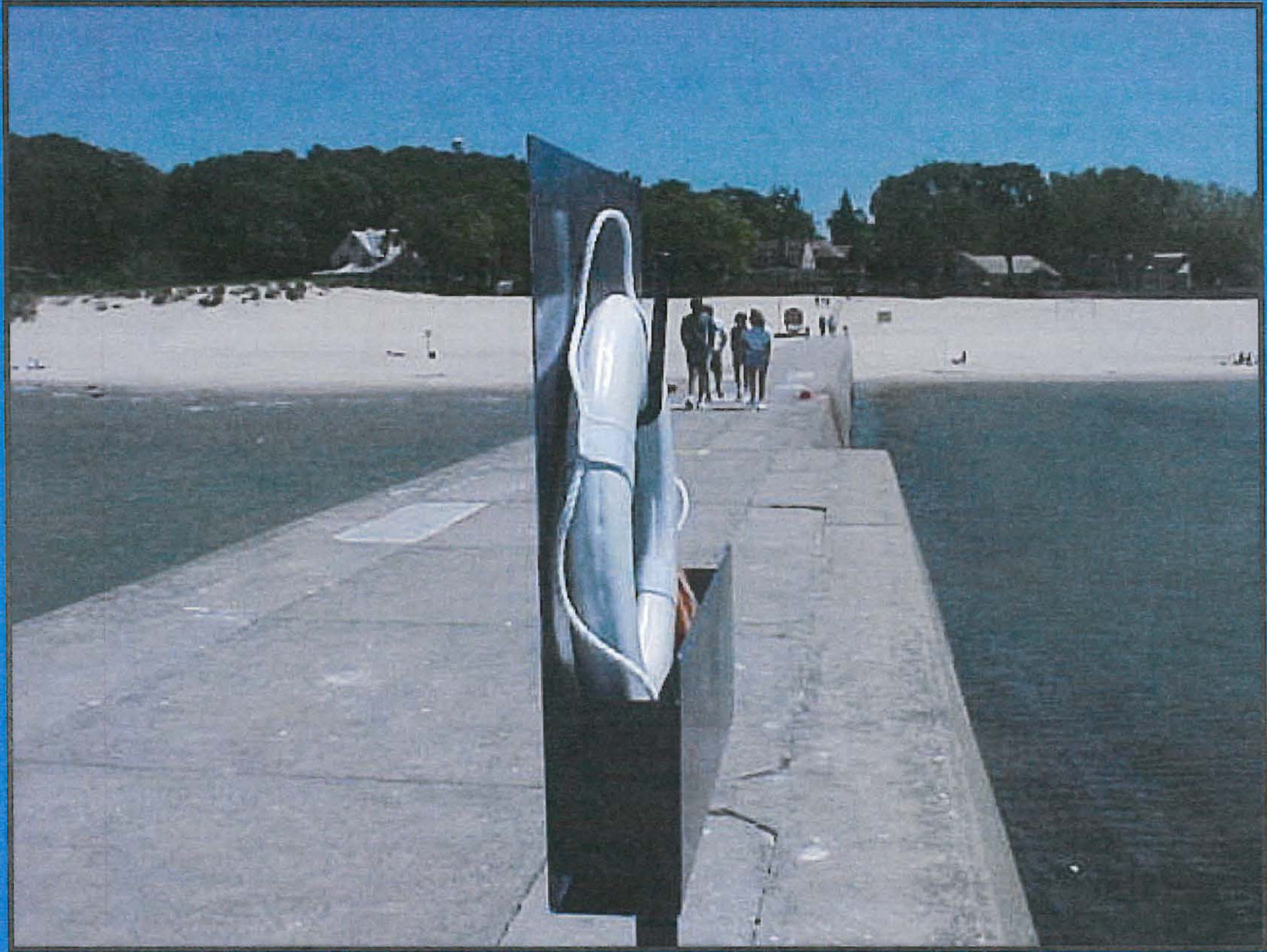
began after Caleb Sutter, a 15-year old  
Frankfort youth, was washed off of the  
Frankfort Pier and drowned,  
June 20, 2000.

In an effort to keep  
our piers available  
and safe to visitors  
and residents, funds  
were raised for these  
life-saving devices.



The Caleb Memorial  
Fund is an on-going  
project, with future  
contributions to be  
used to develop Water Safety Education in  
our schools, and equipment replacement.  
Donations are gratefully accepted at the  
Frankfort-Elberta Area Chamber of  
Commerce.







PLEASE REPORT ANY MISSING EQUIPMENT TO:  
BENZIE COUNTY SHERIFF'S DEPT:

**(231) 882-4484**

THEIR HELP!





# Grand Haven Harbor, MI

## EMERGENCY CALL BOX









# Pier Safety

## What can Communities do?

- Make people aware of potential dangers associated with piers
- Encourage safety precautions be taken when venturing out near the water
- Awareness and education can prevent accidents



# Pier Safety

## Visitor Precautions

- Do not walk on piers during storms or high seas
- Avoid being alone near the water
- Watch for tripping/slipping hazards near piers
- No swimming off piers!
- Read and obey all posted signs
- Become familiar with safety devices on piers

# Web Site

## <http://www.lre.usace.army.mil>

# DETROIT DISTRICT

United States Army Corps of Engineers

Login | Register | 25 February 2003  
Printer Friendly | Site Map | Feedback | FAQ

- Detroit Home Page
- News & Events
- Who We Are
- What We Do
- Where We Are
- Regulatory
- Employment
- Projects and Studies
- Great Lakes
- Doing Business With Us

### News and Events

- Access press releases and news clips from the Corps
- Water related educational materials
- Request presenters through our Speakers Bureau
- Get Corps photos
- Access our publications

### Employment

A link to the Army Civilian Personnel Online Vacancy Announcements homepage.

### Who We Are


Learn about our many offices that include Environmental Services and and Project Management. You

### Projects and Studies

Access our project information sheets, dredging and navigation information, construction

### Image of the Day

Archives



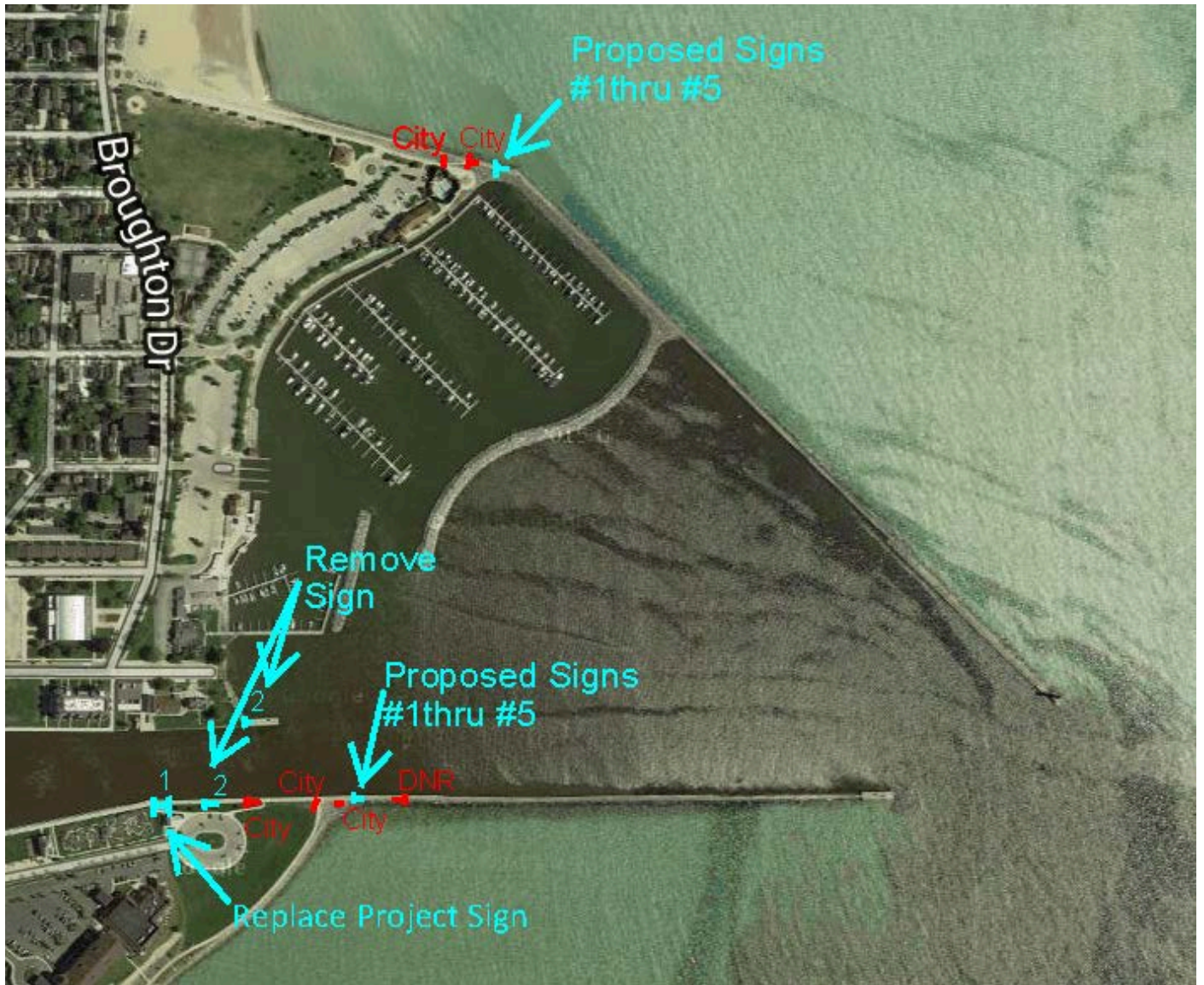
### What's New?

- Saginaw Bay
- **Moving Toward A Sustainable Great Lakes**
- Detroit Riverfront Restoration



**making a difference...**

**[www.respectthepower.org](http://www.respectthepower.org)**



**Sign locations: USACE Project Sign (#1), Removal of old Warning/ Caution Nav. Structure (#2) and installation of proposed new signs (#1 thru #5 Proposed Signs)**



**FIGURE 12 - Example of Proposed Signs #1 and #3 thru #6**

Sign Details:

**Warning Sign**

Font: Helvetica medium extended  
 Font size: 2"  
 Material: cut vinyl  
 Font/Border color: black

Panel size (w/h): 26.25" x 18"  
 Material: Aluminum  
 Mounting: Double Post  
 Color: Lemon Yellow; reflective vinyl

**Structure Picture Sign**

Material: cut vinyl  
 Color: black and lemon yellow  
 Size (w/h): 12" x 12"

**No Swimming Sign**

Font: Helvetica bold  
 Font size: .75"  
 Material: cut vinyl  
 Font color: Black, red circle

Panel size (w/h): 9" x 11"  
 Material: Aluminum  
 Mounting: Single Post (both signs)  
 Color: White, reflective vinyl

**Wave Picture Sign**

Material: cut vinyl  
 Color: black and lemon yellow  
 Size (w/h): 12" x 12"

**No Jumping or Diving Sign**

Font: Helvetica bold  
 Font size: .75"  
 Material: cut vinyl  
 Font color: Black, red circle

Panel size (w/h): 9" x 11"  
 Material: Aluminum  
 Mounting: Single Post (both signs)  
 Color: White, reflective vinyl



US Army Corps of Engineers

logout

inventory

reports

orders

catalog



Detroit District > Kewaunee Proj. Ofc. (Under Lake MI Area Ofc) > Kenosha Harbor, WI > 0004sign 4 of 4 (id 109523)

◀ previous    ◀◀ first

**WWA-40 (GRID-W-Y3)** , page Gateway  
lock, dam & waterway , warning & caution

overview

message

history/cost

notes

map

photos

### sign 0004

|                  |                    |                                |
|------------------|--------------------|--------------------------------|
| sign type        | WWA-40 (GRID-W-Y3) | 🔒                              |
| spec code        | WTW-02             | ☰                              |
| sign status      | proposed           | ▼                              |
| road speed       | 5 mph              | ▼                              |
| viewing distance | 0                  | feet <a href="#">see chart</a> |

### preview



### legend

|              |                     |   |
|--------------|---------------------|---|
| typestyle    | helvetica medium ex | 🔒 |
| size (A/M)   | 2"                  |   |
| longest line | 0.000 A             | 🔒 |
| material     | cut vinyl           | 🔒 |
| layout grid  | 1                   | 🔒 |
| color        | BK black            | 🔒 |

### panel

(autocalc on )

|                 |                 |   |
|-----------------|-----------------|---|
| number of faces | 1               | 🔒 |
| size (w/h)      | 26.25" x 18"    | ☰ |
| material        | ALU aluminum    | 🔒 |
| mounting method | double post     | ☰ |
| mounting height | 0"              |   |
| color           | LY lemon yellow | 🔒 |

### post

|   |   |   |
|---|---|---|
| quantity  | 2   | ☰ |
| size (w/d)  | 4" x 4"   |   |
| material  | AL aluminum   | ▼ |
| color   | NF no finish  | ▼ |
| breakaway   | <input type="radio"/> yes <input checked="" type="radio"/> no |   |
| <input type="button" value="submit sign update"/> |   |   |

### footing

|              |                 |   |
|--------------|-----------------|---|
| quantity     | 0               |   |
| size (w/d/h) | 0" x 0" x 0"    |   |
| material     | select material | ▼ |