

*****ATTACHMENTS*****



REPORT OF BILLING

NOVEMBER 2020

	<u>2020</u>	<u>2019</u>	<u>Increase or (Decrease)</u>
Quarterly Metered*			
<i>(Dist III - south of Union Ave)</i>			
Residential	217,536.59	194,535.67	23,000.92
Multi-Family	25,894.79	23,385.57	2,509.22
Commercial	32,795.59	32,714.18	81.41
Industrial	20,561.05	18,727.06	1,833.99
Public	<u>9,363.89</u>	<u>9,100.30</u>	<u>263.59</u>
Subtotal	306,151.91	278,462.78	27,689.13
Public Fire Protection	67,703.46	67,192.24	511.22
Monthly Metered	<u>352,986.85</u>	<u>315,870.40</u>	<u>37,116.45</u>
Sheboygan Net	726,842.22	661,525.42	65,316.80
Sheboygan Falls	53,405.00	42,214.64	11,190.36
Kohler	<u>26,954.30</u>	<u>23,918.64</u>	<u>3,035.66</u>
Total	807,201.52	727,658.70	79,542.82

* Billing for scheduled district only for the three preceding months usage.

Total accumulative billing for 2020 is \$7,741,743.85. A decrease of \$340,248.66 from 2019 accounted for as follows:

	<u>2020 - Total Year to Date</u>
Sheboygan	(258,273.09)
Sheboygan Falls	(11,988.12)
Kohler	<u>(15,613.58)</u>
	(285,874.79)

Total bills mailed November, 2020: 6,689

Residential	6,103	Multi-Family	6
Multi-Family	94	Commercial	19
Commercial	317	Industrial	65
Industrial	49	Public	9
Public	27		
Quarterly	6,590	Monthly	99



RETURN ON RATE BASE

November 30, 2020

	NOVEMBER 2020	NOVEMBER 2019
<u>Add 2 YR Average</u>		
Utility Plant Balance	\$ 66,399,497	\$ 63,313,370
Materials and Supplies Inventory	\$ 295,375	\$ 280,961
<u>Less 2 YR Average</u>		
Reserve for Depreciation	\$ 22,075,877	\$ 20,621,634
Customer Adv for Const	\$ -	\$ -
 Average Rate Base	 \$ 44,618,995	 \$ 42,972,697
 Net Operating Income YTD	 \$ 1,229,748	 \$ 1,868,654
 Net Operating Income As a Percent of Average Net Rate Base	 2.76%	 4.35%

Rate base is calculated using the two year average balance in the following accounts:

Utility Plant Balance - includes all capital assets less any contributed capital assets.

Materials and Supplies Inventory - includes all materials and supplies on hand and in inventory.

Reserve for Depreciation - includes depreciation on capital assets less any contributed capital assets.



CASH RESERVE
November 30, 2020

Ending balance on report for October 31, 2020	10,485,351.71
Plus: Receipts	267,660.79
Misc Receipts (includes stop loss reimbursements)	22,909.74
Direct Pay Receipts	273,505.03
Money Market/CDARs Investment Interest	1,697.28
Minus:	
Disbursements - vendors and payroll	(1,121,380.63)
Bank Service Fees Credit	(807.77)
Health & Dental Claims/Adm Costs	(199,791.69)
NSF Checks & Customer Refunds	(1,358.82)
PSN Deposit Fees	(961.32)
Reallocate Sewer/Garbage - payments	10,302.33
Reallocate Sewer/Garbage - monthly	(750.73)
Online Payments in Transit	(14,634.24)
Bond Interest Payment	(147,447.77)
Payroll - WRS in Transit	32,328.66
DNR SDWL Final LSL Reimbursement	10,287.55
Cardmember Services	(842.16)
Postage	(3,437.52)
Utility Water Payments	(1,888.31)
 Ending Balance November 30, 2020	 \$ 9,610,742.13

Note: The above amount includes:

Bond Reserve Fund	688,823.56
CD Investment Account - 12 month	1,048,611.89
CD Investment Account - 6 month	-
CD Investment Account - 6 month restricted	-
Money Market Investment	2,923,467.27
Health Insurance Restricted Reserve	380,000.00
BAN Funds for Construction	2,403,368.28
Total	\$ 7,444,271.00

General Unrestricted Operating Cash	2,166,471.13
-------------------------------------	--------------



STATEMENT OF NET POSITION
NOVEMBER 30, 2020 AND 2019

<u>Assets and Other Debits Utility Plant</u>	<u>Year to Date 2020</u>	<u>Year to Date 2019</u>	<u>Liabilities and Other Credits</u>	<u>Year to Date 2020</u>	<u>Year to Date 2019</u>
Utility Plant	75,924,898	71,207,094	<u>Proprietary Capital</u>		
Depreciation- Utility Plant	24,586,605	23,001,616	Capital Paid by Municipal	1,640,701	1,640,701
Net Utility Plant	<u>\$ 51,338,293</u>	<u>\$ 48,205,478</u>	Unapprop. Earned Surplus	45,660,284	43,878,814
			Total Proprietary Capital	<u>\$ 47,300,985</u>	<u>\$ 45,519,515</u>
<u>Other Property and Investments</u>			Bonds, Loans & Advances	13,677,170	11,606,505
Appropriated Funds	2,403,368	-	Total Long Term Debt	<u>\$ 13,677,170</u>	<u>\$ 11,606,505</u>
Bond Redemption Fund	688,824	706,627			
Net Pension Asset ¹	-	387,084	<u>Current & Accrued Liabilities</u>		
Deferred Outflow - Pension & OPEB ¹	1,262,190	729,101	Accounts Payable	1,027	1,000
Total Other Prop & Investment	<u>\$ 4,354,382</u>	<u>\$ 1,822,812</u>	Accrued Liabilities	1,100,833	1,081,189
			Total Current & Accrued Liab.	<u>\$ 1,101,860</u>	<u>\$ 1,082,189</u>
<u>Current and Accrued Assets</u>			<u>Deferred Credits</u>		
Cash & Investments	6,519,300	8,437,022	Bond Premium	223,952	267,312
Accounts Receivable	1,674,837	1,336,104	Pre 2003 Depr on Contributed Assets	77,449	102,583
LSL Loan Receivable ³	78,402	-	Other Deferred Credits ³	3526.17	0
Grant Receivable - Restricted ²	0	14,397		<u>\$ 304,927</u>	<u>\$ 369,895</u>
Materials & Supplies Inventory	306,938	283,812	<u>Operating Reserves</u>		
Prepaid Expenses	49,401	35,252	Net Pension & OPEB Liability ¹	275,425	299,388
Total Current & Accrued Assets	<u>\$ 8,628,878</u>	<u>\$ 10,106,587</u>	Deferred Inflow - Pension & OPEB ¹	1,103,698	766,023
			Accrued Vac & Sick Leave	557,488	491,361
Total Assets and Debits	<u>\$ 64,321,553</u>	<u>\$ 60,134,876</u>	Total Operating Reserve	<u>\$ 1,936,611</u>	<u>\$ 1,556,772</u>
			Total Liab & Other Credits	<u>\$ 64,321,553</u>	<u>\$ 60,134,876</u>

¹ See full audited Financial Statements for disclosures and details regarding pensions and OPEB.

² Grants Receivable - Restricted pertains to the Lead Water Service Lateral Replacement Program funded by the DNR.

³ Receivable related to the new SWU LSL loan program.



STATEMENT OF REVENUE, EXPENSES AND CHANGES IN NET POSITION
NOVEMBER 30, 2020 AND 2019

	2020		2019		Incr (Decr) YTD	% Incr/Decr YTD
	MONTH	YTD	MONTH	YTD		
Sales Revenue ¹	\$ 819,972	\$ 7,486,426	\$ 736,706	\$ 7,848,321	\$ (361,895)	-4.61%
Other Water Revenue ²	\$ 4,913	\$ 91,220	\$ 5,321	\$ 52,096	\$ 39,124	75.10%
Total Operating Revenues	\$ 824,885	\$ 7,577,646	\$ 742,027	\$ 7,900,417	\$ (322,771)	-4.09%
Operating Expenses ³	442,204	3,237,339	321,512	3,043,774	193,565	6.36%
Maintenance Expenses ⁴	59,736	567,852	68,723	580,626	(12,773)	-2.20%
Depreciation Expenses ⁵	126,469	1,425,936	115,705	1,291,412	134,524	10.42%
Taxes	101,714	1,116,770	107,413	1,115,951	818	0.07%
Total Operating Expenses	\$ 730,122	\$ 6,347,896	\$ 613,352	\$ 6,031,763	\$ 316,134	5.24%
Utility Operating Income	\$ 94,762	\$ 1,229,749	\$ 128,675	\$ 1,868,654	\$ (638,905)	-34.19%
Other Income & Expense						
Non-operating Grant Revenue	2,184	37,634	6,897	89,524	(51,890)	
Non-Operating Grant Expenses	(2,184)	(37,634)	(6,897)	(89,524)	51,890	
Bond Premium	2,989	31,631	2,739	30,133	1,498	
Interest Earned on Investments	1,697	42,800	5,588	67,256	(24,456)	
Contributions	-	-	-	-	-	
Other Expense	-	(34,475)	-	-	(34,475)	
Misc Amortization	2,094	23,039	2,094	23,039	-	
Bond Interest Expense	(28,214)	(300,955)	(26,368)	(290,685)	(10,270)	
Change in Net Position	\$ 73,329	\$ 991,788	\$ 112,728	\$ 1,698,396	\$ (706,607)	

¹ The decrease in Sales Revenue is due to a decrease in usage among industrial, commercial and public authority customers related to economic conditions caused by the on-going health emergency. Usage has improved in recent months, but remains below 2019 levels.

² The increase in Other Water Revenues includes a class action settlement pertaining to the purchase of liquid alum over a number of years and connection fees for a large southside development. SWU also received COVID grant funds in the amount of \$8,190 from Wisconsin Routes to Recovery as part of the CARES Act.

³ The increase in Operating Expense is due costs related to customer installations for LSL loans and grants, and increase in legal costs related to PSC review and approval of the LSL program and water rates, as well as legal costs related to interim BAN financing for the raw water intake project.

⁴ The decrease in maintenance expense is due to less pumping structures maintenance, hydrant maintenance, and Park Ave structures maintenance in 2020.

⁵ The increase in Depreciation Expense is due to the capitalization of the Horizon water tower, including new infrastructure at the SouthPointe Enterprise Campus.



APPROVAL OF VOUCHERS
November 30, 2020

<u>Total Of The General Vouchers</u>	<u>\$ 969,792.10</u>
<u>Gross Payroll</u>	<u>\$ 159,506.94</u>
<u>Net Payroll</u>	<u>\$ 97,945.08</u>

BOARD OF WATER COMMISSIONERS

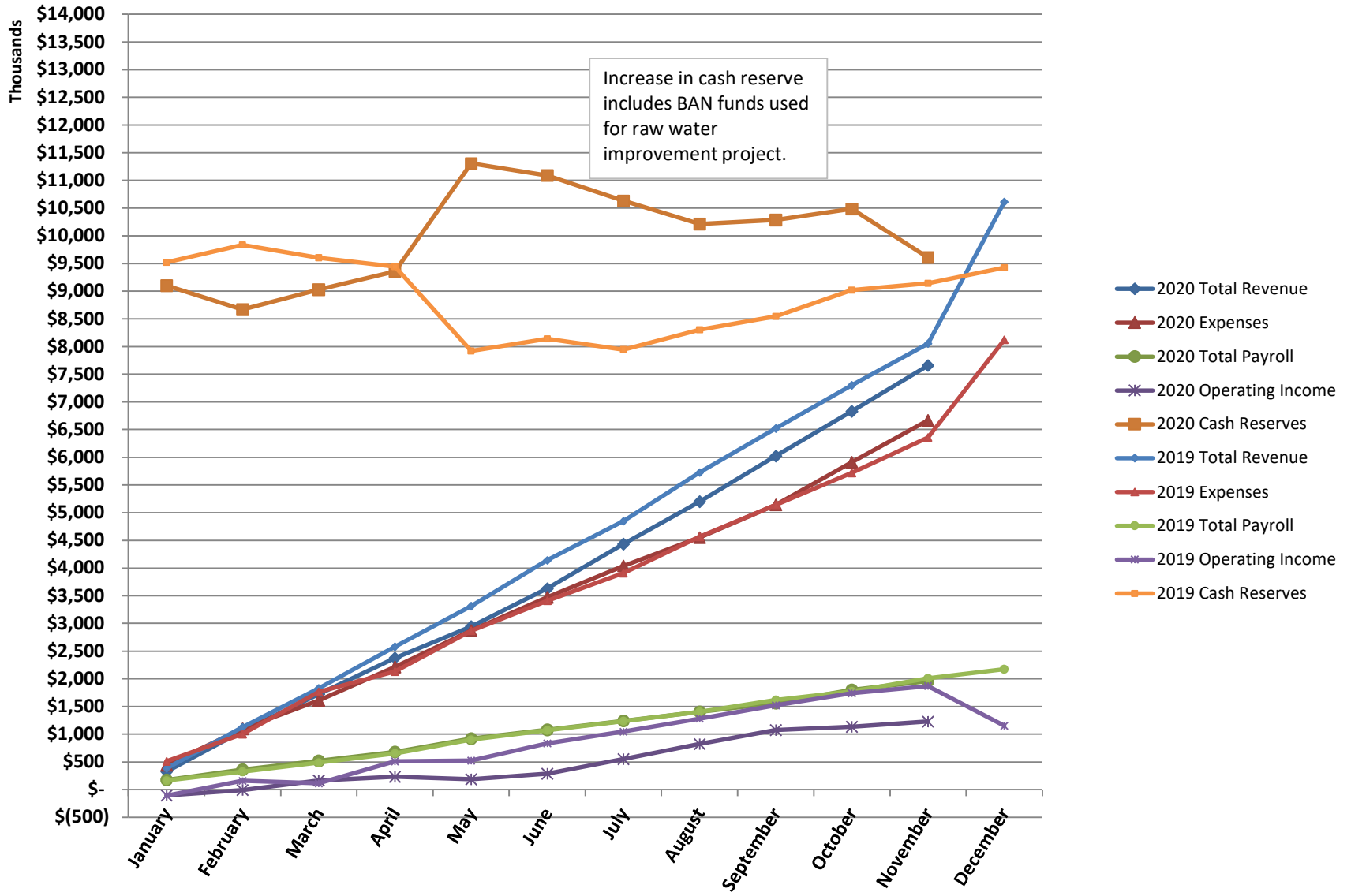
PRESIDENT

SECRETARY

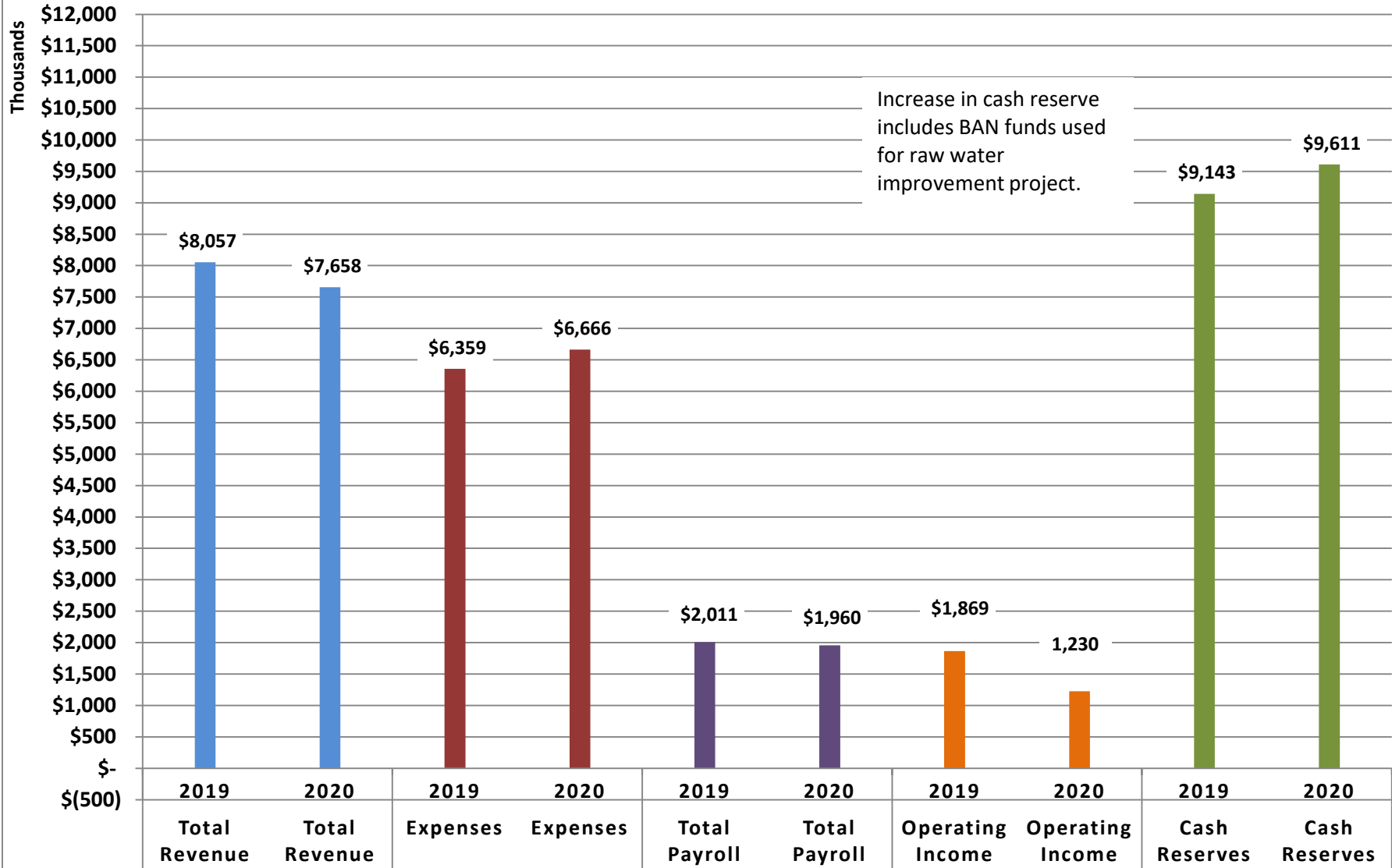
MEMBER

SUPERINTENDENT

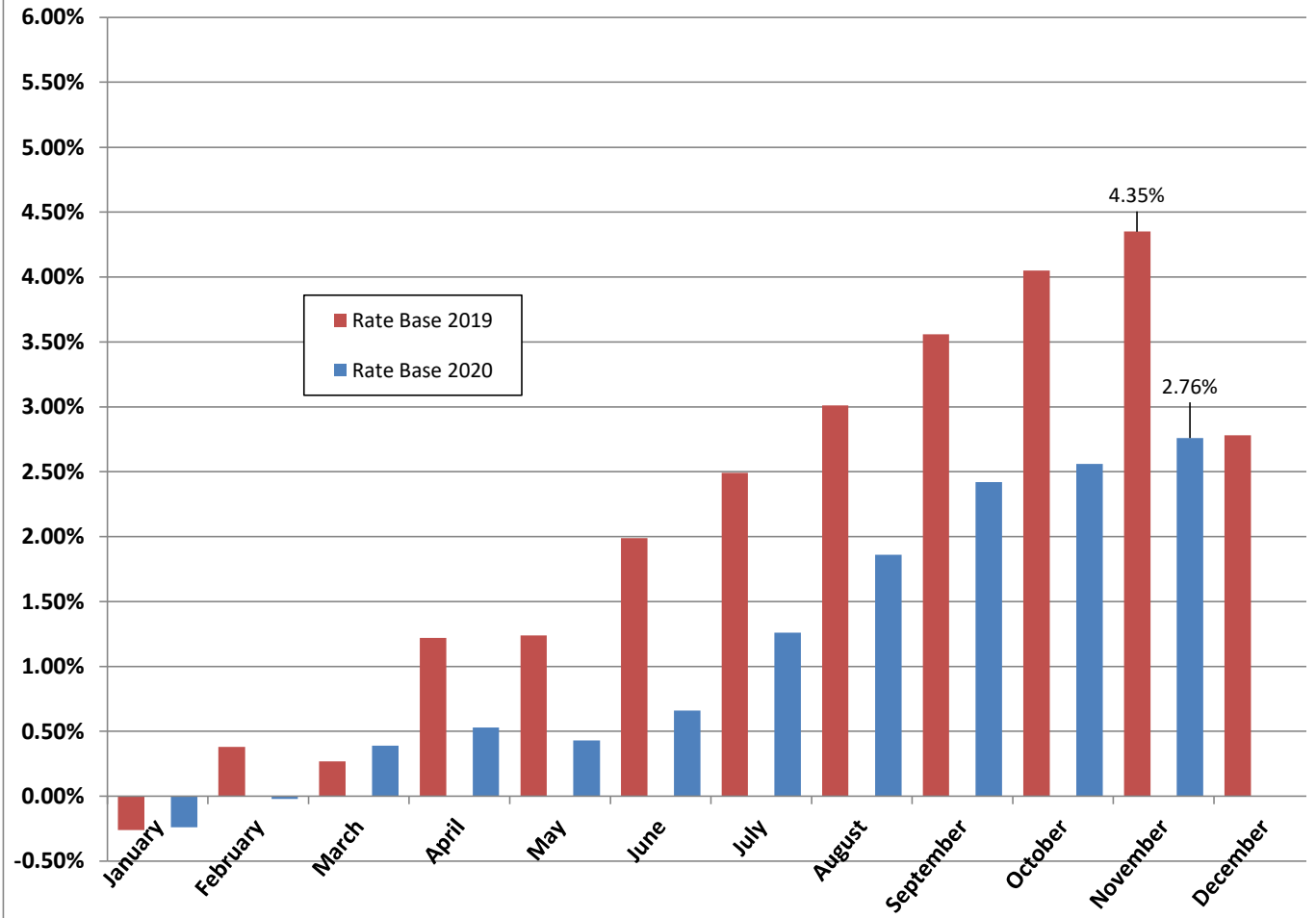
SHEBOYGAN WATER UTILITY NOVEMBER 2020 MONTHLY FINANCIAL TREND



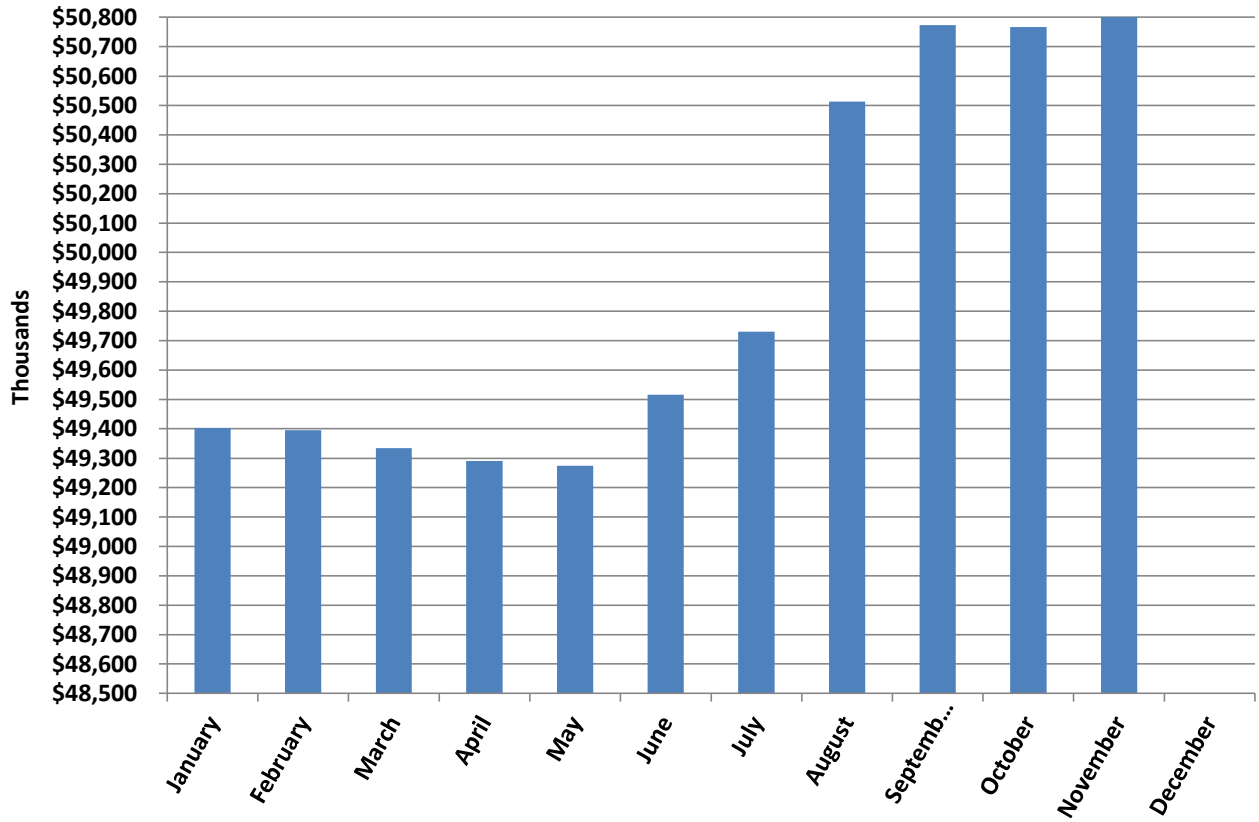
SHEBOYGAN WATER UTILITY NOVEMBER 2020 YTD FINANCIAL POSITION



SHEBOYGAN WATER UTILITY NOVEMBER 2020 RETURN ON RATE BASE



SHEBOYGAN WATER UTILITY NOVEMBER 2020 UTILITY PLANT BALANCE



Distribution System -- November 2020

Street Valves and Hydrant Valves Installed (including water main projects and others)

Location	Date Installed	Size ("), Jt	Installed By	Type
S. 17th St and Broadway Ave	11/12/2020	6" MJ	ute.	G (vert)
Total Valves Installed = 1				

Street Valves and Hydrant Valves Removed

Location	Installed	Abandoned	Type
S. 17th St. at Broadway Ave. (N)		11/12/2020	
Total Valves Removed = 1			

Street Valves and Hydrant Valves Abandoned

Location	Installed	Abandoned
Total Valves Abandoned = 0		

Street Valves and Hydrant Valves Maintained

Location	Maintained	Size
Total Valves Maintained = 0		

Hydrants Installed (including water main projects and others)

Location	Installed	Tr Size	Valve	By
S. 21st St and Broadway Ave (SW)	11/27/2020	6"	n	ute.
Total Hydrants Installed = 1				

Hydrants Removed (including water main projects and others)

Location	Installed	Removed	Hyd Valve?	By
S. 21st St. at Broadway Ave. (SW)		11/27/2020	n	ute.
Total Hydrants Removed = 1				

Hydrants Abandoned (including water main projects and others)

Location	Installed	Abandoned	Tr Size	Hyd Valve?
Total Hydrants Abandoned = 0				

Hydrants Maintained/Moved (including water main projects and others)

Location	Installed	Maintained
Total Hydrants Maintained/Moved = 0		

Water Main Breaks

Location	Date	Size
1637 Geele Ave	11/2/2020	12"
2618 N. 24th St	11/12/2020	6"
2411 N. 22nd St	11/13/2020	6"
2105 S. Memorial Place	11/20/2020	6"
Total Water Main Breaks = 4		

SUMMARY

Number of feet of 4 inch water main installed	0.0	water main
Number of feet of 6 inch hydrant lead installed	0.0	
Number of feet of 6 inch water main installed	0.0	
Number of feet of 8 inch water main installed	0.0	
Number of feet of 12 inch water main installed	0.0	
Number of feet of 16 inch water main installed	0.0	
Number of feet of 20 inch water main installed	0.0	
Number of feet of 24 inch water main installed	0	
Number of feet of water main abandoned or removed	0	
Number of water main breaks repaired	4	
Number of hydrants installed	1	hydrants
Number of hydrants removed or abandoned	1	
Number of hydrants maintained or moved	0	
Number of street valves installed	1	valves
Number of hydrant valves installed	0	
Number of street valves removed or abandoned	1	
Number of hydrant valves removed or abandoned	0	
Number of valves maintained	0	
Number of water connections installed	2	

MONTHLY CONSTRUCTION-MAINTENANCE DEPARTMENT REPORT

November 2020

Distribution System Maintenance:

- Repaired water main leak at 1637 Geele Ave.
- Assisted a local plumber with a new connection to the Oscar Development (Vandervart site).
- Repaired a water main leak at 2105 S Memorial Place.
- Started the annual inventory counting process.
- Repaired a water main leak at 2618 N 24th Street.
- Repaired a water main leak at 2411 N 22nd Street.
- Replaced a hydrant that was hit by a motorist at S 21st Street and Broadway Avenue.
- Worked with the Operations department to successfully bring the Georgia Avenue Standpipe back into service.
- Saw cut and made repairs to water main break service holes.
- Hauled in fill to replenish stock.

Water Quality:

- Completed seasonal dead-end flushing.

Taps:

- 1" tap at 530 S 14th St. Lead service was removed from system.

Building/Grounds Maintenance:

- General shop maintenance and cleaning.

Equipment Maintenance:

- Performed routine maintenance and repairs on construction equipment and vehicle fleet.

CUSTOMER RELATIONS & FISCAL SUMMARY

UTILITY BILLS

Mailed
5810

Emailed
1968



PAYMENT TRANSACTIONS

Electronic 3,170

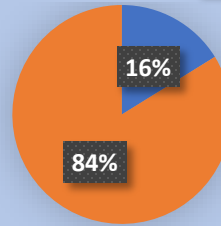
Cash & Check 2,622

#

5,792

Total Number of
Payments Processed

10
Payments Returned
Not Honorable



■ Auto-Pay
■ One Time

Nov 2019 Nov 2020

Payment Window	828	0
Drop Box Payments	232	554
Electronic Payments	2900	3170
Cash/Check Payments	2007	2068
Total Payments	5967	5792

COLLECTIONS

District 1 **Suspended Disco Program
due to PSC rule regarding pandemic*

\$ 988,743

Billed

\$257,264

Outstanding After
Due Date

578

Past Due
Letters Mailed

0

Properties
Disconnected

\$110,209

Outstanding At
Month End

CUSTOMER SERVICE

	November 2019	November 2020
Answered Calls	1621	1197
Account Transfers	252	212
Property Data Requests	83	95

PSC COMPLAINTS

0 PSC Complaint(s) Filed

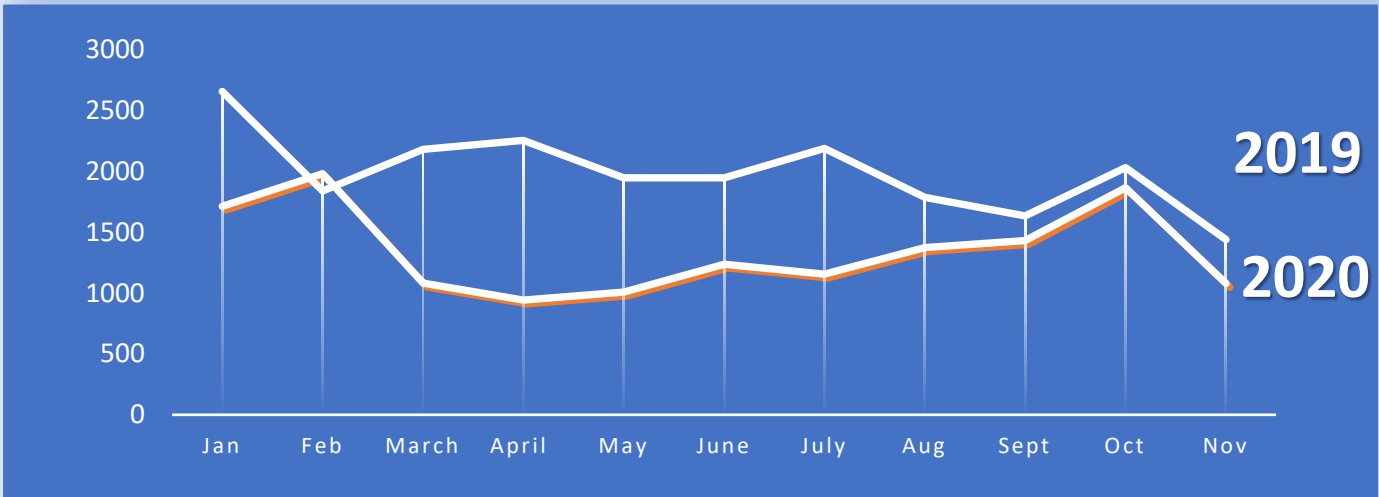
ACCOUNTS PAYABLE

210 Invoices Paid

NOVEMBER
2020

CUSTOMER RELATIONS & FISCAL SUMMARY

SERVICE TECH MILES DRIVEN



CROSS CONNECTION

16 Inspections

*Commercial/Industrial CCC Program started back up in June 2020. Previously suspended due to COVID-19.

LEAK ALLOWANCE

2 Customer Requests **579** CCF Allowed @ Reduced Rate



SERVICE LEAKS

2 New Reported Leaks

0 Leaks Fixed

2 Active Leak(s) Month End

METERS

17

Meters

Installed/Replaced

30

Meters Tested



NOVEMBER
2020

CUSTOMER RELATIONS & FISCAL SUMMARY

FACEBOOK PAGE



1 November New Followers

658 Total Followers

WEBSITE VISITORS

2,338



2019 Visits in November: 2,895

Top Page Viewed: Pay Your Bill

MOST IMPRESSIONABLE FACEBOOK POSTS

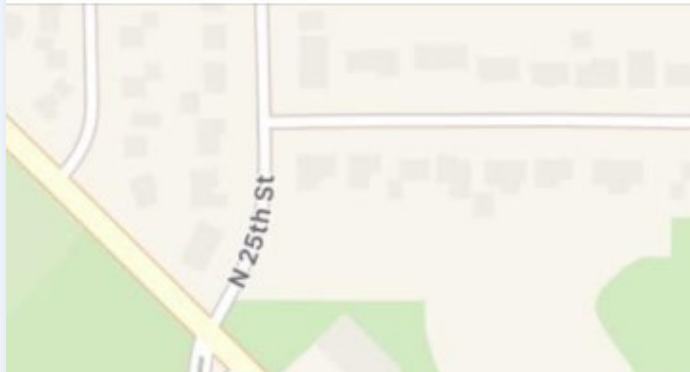


⚠️ Main Break ⚠️

Distribution Techs are responding to a main break in N. 24th St between Main and North Avenue.

Please you caution when driving in this area.

Thank you for your patience as Techs work to repair the main.



146
People Reached

3
Engagements

Boost

Andrew Filtz, Dave Sartori and Wes Gizaw

Sheboygan Water Utility

Published by Tamara Mae [?] · November 13 ·

⚠️ Main Break ⚠️

Distribution Techs are responding to a main break in N. 22th St .

Please you caution when driving in this area.... See More



132
People Reached

1
Engagement

Boost Post

Dave Sartori

NOVEMBER
2020

CUSTOMER RELATIONS & FISCAL SUMMARY

ADDITIONAL CR/F ACTIVITIES OCTOBER

- ◆ The moratorium on disconnections was extended by the PSC to April 15, 2021.
- ◆ Late Payment Charges will continue to be waived until April 15, 2021 per Board approval and as allowed by PSC.
- ◆ The USS continue to rotate their schedule in the office on teams of two.
- ◆ Service Techs continue meter change outs and testing for commercial and industrial accounts.
- ◆ The residential radio read (Orion) installation program is on hold due to the pandemic. We have approximately 1,100 Orions to install to complete the program.
- ◆ Completed year end meter inventory.
- ◆ The payment window at the Utility office was temporarily closed starting Monday, October 19, 2020 due to the increase community spread of Covid-19.
- ◆ November was the first full month of no fee being passed on to the customer for online and phone payments. It is difficult to determine if there was an increase in the use of these payment methods because the payment window was closed in November and overall payments are down.
- ◆ A total of \$114,181 water dollars were transferred to property taxes for collection.

NOVEMBER
2020

November 2020

OPERATIONS' DEPARTMENT MONTHLY REPORT

PUMPAGE	HIGH LIFT		LOW LIFT		2020 VS 2019
	2019	2020	2019	2020	
Total in MG	333.971	343.915	341.021	349.851	HL 2.98%
Daily Average (MG)	11.132	11.496	11.367	11.662	
Max. Day (MG)	12.844	14.787	13.886	14.495	2020 VS 2018
					HL
Gal/KwH	1,203	1,188	5,154	5,109	-6.73%
ELECTRICAL COSTS					
	2019		2020		
A. Pumping:	KwH	\$	KwH	\$	
High Lift	276,086	\$19,790.58	287,436	\$21,264.80	
Low Lift	65,806	\$4,717.15	67,992	\$5,030.11	
Wash Pump 1	2,100	\$150.53	2,100	\$155.36	
Georgia St. Bstr.	50,400	\$4,707.15	51,300	\$4,617.67	
Wilgus Ave. Bstr.	2,800	\$340.64	2,800	\$342.93	
EE Pit / Bstr.	5,043	\$586.02	4,913	\$571.20	
Erie Ave. Bstr.	15,600	\$2,093.07	0	\$0.00	\$/KwH
Sub Total	417,835	\$32,385.14	416,541	\$31,982.06	-0.9%
B. Treat./Fiscal/Misc.	KwH	\$	KwH	\$	
Office & Maint. Bldg.	5,076	\$581.12	4,690	\$500.08	
Filter Plant / Pump Station / 2nd Service	62,408	\$5,117.89	47,472	\$5,700.75	
Sub Total	67,484	\$5,699.01	52,162	\$6,200.83	\$/KwH 40.8%
C. Distribution:	KwH	\$	KwH	\$	
Taylor Hill Tank	2,227	\$272.65	1,632	\$203.15	
Kohler Meter Pit	0	\$0.00	0	\$0.00	
EE Tower	0	\$0.00	1,310	\$166.13	
Washington (PRV) Pit	437	\$69.91	621	\$91.57	
Sub Total	2,664	\$342.56	3,563	\$460.85	\$/KwH
Total Electrical Costs	487,983	\$38,426.71	472,266	\$38,643.75	3.9%
Electrical Cost / MG		\$115.06		\$112.05	
NATURAL GAS COSTS					
	2019		2020		
	CCF Used	Cost	CCF Used	Cost	
Production Facility	2,356	\$1,222.08			
South Basin	3,333	\$1,778.54			
Georgia St. Bstr.	72	\$65.42			
Erie Ave. Bstr.	53	\$53.58	72	\$55.39	
Wilgus Ave. Bstr.	27	\$29.16	7	\$19.95	
Office & Maint. Bldg.	1,057	\$566.74	1,657	\$775.54	\$/CCF
Total Natural Gas Costs	6,898	\$3,715.52	1,736	\$850.88	-9.0%
Natural Gas Cost / MG		\$11.13		\$2.47	
CHEMICAL COSTS					
	2019		2020		
	Lbs. Used	Cost	Lbs. Used	Cost	
Alum	90,150	\$12,981.60	61,789	\$8,743.14	-1.7%
Carbon	0	\$0.00	0	\$0.00	#DIV/0!
Chlorine	6,711	\$6,066.74	6,517	\$5,330.91	-9.5%
Fluoride	1,781	\$1,567.28	1,597	\$1,405.36	0.0%
KMnO4	0	\$0.00	0	\$0.00	#DIV/0!
Cationic Polymer	1,307	\$2,025.85	1,462	\$2,266.10	0.0%
Liquid Phosphate	2,443	\$3,102.61	2,422	\$3,075.94	0.0%
Total Chemical Costs		\$25,744.08		\$20,821.45	-19.1%
Chemical Cost / MG		\$77.08		\$60.37	
Grand Total		\$67,886.31		\$60,316.08	-11.15%
Total Cost / MG		\$203.27		\$174.89	-13.96%

YTD HL 2020 vs 2019	-5.54%	YTD HL HIGH DAY PUMPAGE	16.469	August 27, 2020
YTD HL 2020 vs 2018	-11.18%	YTD HL LOW DAY PUMPAGE	8.396	January 1, 2020

NOTE:

November Pumpage is up ~2.98%.

AP has not received WPS invoices for Plant, South Basin, and GAPS

November maint report was not available on remote platforms. November maint report will be included at the January board meeting

	YTD HL Ave Day
2020	11.724
2019	12.696
2018	13.458

COMPARATIVE SUMMARY OF PLANT OPERATIONS

November 2019

vs

November 2020

Pumping Record

High Lift

Low Lift

	2019	2020	Diff.		2019	2020	Diff.
Tot. Water in MG	333.971	343.915	2.98%	Tot. Water in MG	341.021	349.851	2.59%
Daily Average	11.132	11.496	3.27%	Daily Average	11.367	11.662	2.60%
Maximum Day	12.844	14.787	15.13%	Maximum Day	13.886	14.495	4.39%
Minimum Day	7.165	8.366	16.76%	Minimum Day	7.001	8.207	17.23%
By Natural Gas	1.842	3.316	80.02%	By Natural Gas	1.884	2.475	31.37%
Power in KWH	276,086	287,436	4.11%	Power in KWH	65,806	67,992	3.32%
Gals. per KWH	1,203	1,188	-1.22%	Gals. per KWH	5,154	5,109	-0.86%
Power \$ / KWH	\$0.07168	\$0.07398	3.21%	Power \$ / KWH	----	----	----
Power \$ / MG	\$59.26	\$61.66	\$2.40	Power \$ / MG	\$13.83	\$14.38	\$0.55
Tot. Power \$/MG	\$116.60	\$112.19	(\$4.41)	Tot. Power \$/MG	----	----	----

Treatment Chem.

Lbs. Used

Cost

Total Lbs.	2019	2020	Diff.	Total Cost	2019	2020	Diff.
Alum	90,150	61,789	-31.46%	Alum	\$12,981.60	\$8,743.14	(\$4,238.46)
Carbon			#DIV/0!	Carbon	\$0.00	\$0.00	\$0.00
Chlorine	6,711	6,517	-2.89%	Chlorine	\$6,066.74	\$5,330.91	(\$735.83)
KMnO4	0	0	#DIV/0!	KMnO4	\$0.00	\$0.00	\$0.00
Polymer	1,307	1,462	11.86%	Polymer	\$2,025.85	\$2,266.10	\$240.25
Liquid Phosphate	2,443	2,422	-0.86%	Liquid Phosphate	\$3,102.61	\$3,075.94	(\$26.67)
Lb/ MG:				Cost / MG:			
Alum	264.4	176.6	-33.19%	Alum	\$38.07	\$24.99	(\$13.08)
Carbon	0.0	0.0	#DIV/0!	Carbon	#DIV/0!	#DIV/0!	#DIV/0!
Chlorine	19.7	18.6	-5.34%	Chlorine	\$17.79	\$15.24	(\$2.55)
KMnO4	0.0	0.0	#DIV/0!	KMnO4	#DIV/0!	#DIV/0!	#DIV/0!
Liquid Phosphate	7.2	6.9	-3.36%	Liquid Phosphate	\$9.10	\$8.79	(\$0.31)

Fluoride:

	2019	2020		2019	2020		
Total Lbs.	1,781	1,597	-10.33%	Cost	\$1,567.28	\$1,405.36	(\$161.92)
mg/l applied as F	0.65	0.70		Cost/MG	\$4.70	\$4.09	(\$0.61)
Av. Res. Plt. Tap	0.76	0.68					

Water Quality:

Raw

TAP

	2019	2020
Turbidity	15.50	12.20
pH	8.21	8.22
Alkalinity	119.9	109.7
MF (E-Coli)	11.7	2.8
Temperature	38.0	42.3
Wash-H2O % /LL	2.63	2.34
Av. Flt. Run/hrs	132.4	120.6
Av. ROF / MG	1.32	1.36

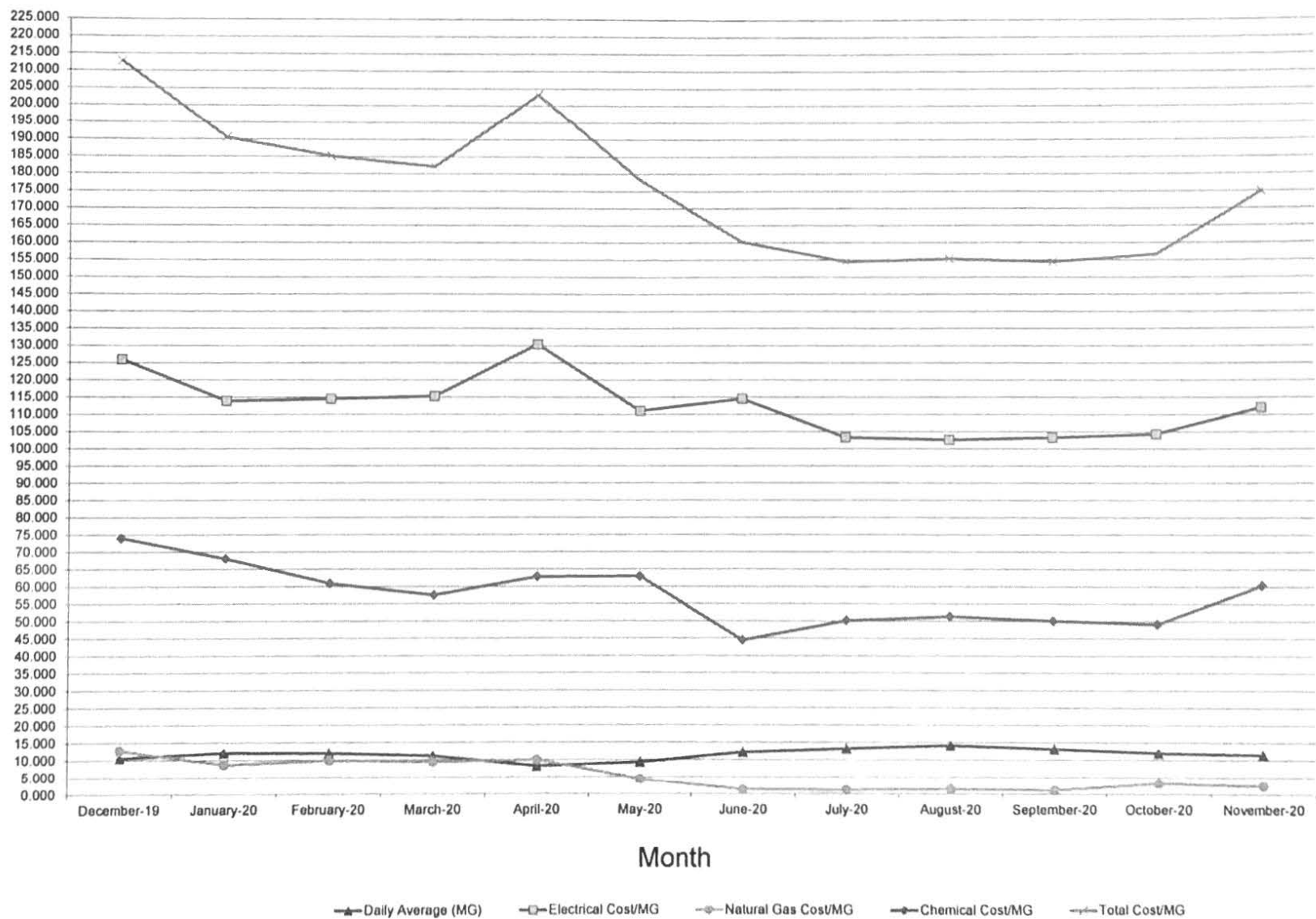
	2019	2020
Turbidity	0.017	0.030
pH	7.44	7.63
Alkalinity	103.1	102.3
Plate Count	0.00	0.00
Colilert	0	0
Temp.	39.1	44.4
Cl Res.	0.84	0.87

Natural Gas:

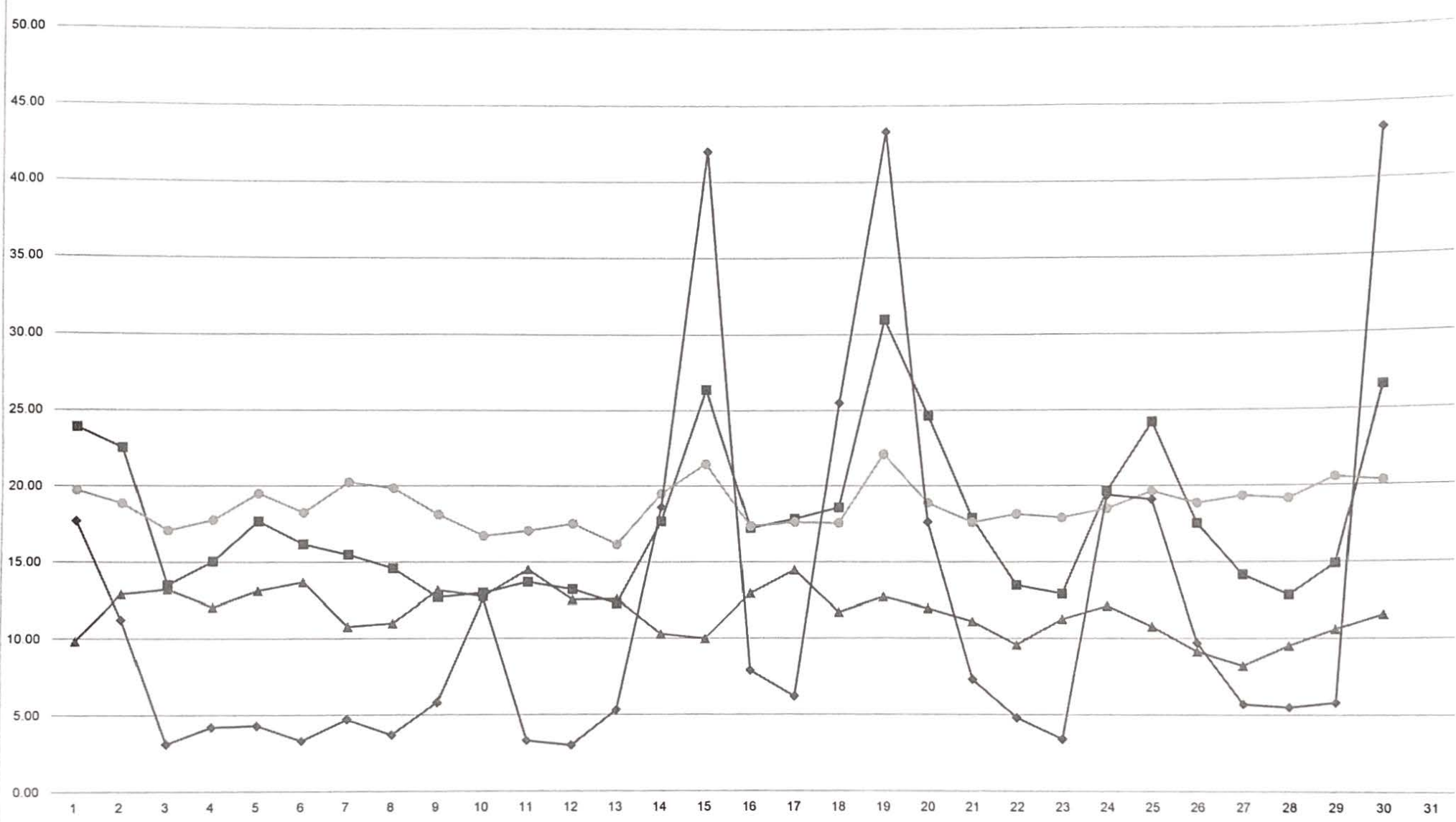
	2019	2020		2019	2020	Diff.
Nat. Gas Heating	0	-362	Plant & South Basin	\$2,819.32	#DIV/0!	#DIV/0!
Nat. Gas Pumping	349	362		\$181.30	#DIV/0!	#DIV/0!

	CCF	Cost	Natural Gas Cost	Natural Gas CCF
#3 Gas Pump	96.1	#DIV/0!	\$0.00	0
#4 Gas Pump	72.0	#DIV/0!		
#7 Gas Pump	110.0	#DIV/0!		
Electric Generator	84.0	#DIV/0!		
Pumping totals	362.1	#DIV/0!		

Plant Operations: Expense Report



November 2020: Sheboygan Water Utility Plant Operations Summary



▲ Flow (MGD)
 ■ Alum (lbs/MG)
 ○ CL2 (lbs/MG)
 ◆ Raw Turbidity (NTU's)

Scaling
 Alum (x.10)

Date: December 16, 2020
To: Joe Trueblood, Utility Superintendent
From: Bill Swearingen, Operations Supervisor
Subject: Georgia Ave Standpipe-Electric Actuator

The existing 18" butterfly valve located in the pit for the Georgia standpipe can only be controlled onsite. Installing an electric actuator for remote control, would allow better operational flexibility for multiple tank operations in the boosted zone and normal zone. Operators would have the ability to control water entering or leaving the tank and would have an added benefit for emergency shutdowns via SCADA.

The electric actuator would be the final upgrade to the Georgia standpipe painting project.

I would like to recommend installing the electric actuator.

The attached proposal includes hardware, programming and startup services. Electric and SCADA integration work would be time and materials basis.

<u>Items</u>	<u>Total</u>
Electric Actuator	\$6,907.00
Hardware, programming and startup services	\$1,500.00
Total:	\$8,407.00

DORNER QUOTE

VALVES & AUTOMATION

To: Andy Wellman
 Sheboygan Water Utility
 72 Park Avenue
 Sheboygan, WI 53081

Date of Quote: November 10, 2020
 Quote: Q2045MSSH.XLS

Job Ref.: 18" Pratt AUMA Retrofit
 Georgia Ave. Tower
 Terms: Net 30 Days

Industry Code: 4941
 Mail Order To: Dorner Company
 N61W23043 Silver Spring Dr.
 PO Box 189
 Sussex, WI 53089-0189

FOB: Shipping Point / No Freight Allowed

Phone: (262) 932-2100
 Ext.: 118

Validity: 30 Days

Fax: (262) 932-2101

Delivery: 8-10 Weeks

Prepared By: Tim Ruesch
 email: timr@dornerco.com

This quotation is subject to the manufacturer's terms and conditions and warranty (available upon request). Delivery quoted represent an estimate only, and are quoted as "subject to prior sale". State and local use taxes are not included. Tax exempt certificates must be provided. Final acceptance by Dorner Company, Sussex, WI.

AUMA Actuator for existing 18" Pratt Butterfly Valve

Valve Size	Qty	Order Code	Unit Price	Extended Price
18"	1	SAR07.6-54B/GS100.3 160:1	\$6,907.00	\$6,907.00

Description:
 Actuator:

(SAR07.6-54B/GS100.3 160:1) AUMA SAR07.6-54B Motor Operator with GS100.3 Gear Unit. 60 Second Speed of Operation. Supplied with AUMA Automatic Non-Intrusive Integral Motor Controls. OPEN-STOP-CLOSE-EMERGENCY Digital Inputs. Includes Electro-Mechanical Motor Starters, Power Supply, with Programmable Signal Relay for Collective Fault Signal, and 5 Programmable signal Relays, Compartment Heater, Mechanical Dial Position Indicator, MWG Magnetic Limit and Torque Transmitter (Absolute Encoder), Signal Transmitter (Internally Powered) - Provides Remote Indication of Valve Position, and Handwheel Override. Local Controls Include: 3 Pushbuttons (OPEN / STOP / CLOSE), 5 Indicating Lights and Padlockable Selector Switch (LOCAL / OFF / REMOTE). Double Sealed Conduit Terminal Compartment, 120/60/1, NEMA 4, 120VAC Control Voltage.

Notes:

- 1 Actuators as quoted with mounting hardware for existing 18" Pratt Butterfly.
- 2 Start-up services to include installation and calibration only. Wiring by others.
- 1 Day Dorner Company field service (Includes travel and mileage to and from job site). Includes installation, and return trip for final calibration after wiring. \$1,500.00

The Accident Fund Difference

More than 100 years of experience has led to Accident Fund's success in providing superior workers' compensation solutions to policyholders. We've learned that when someone gets hurt on the job, it impacts more than just one person. Our team is committed to doing what it takes to bring injured workers back to their families, back to their jobs and back to life as usual.

TeleCompCare

Care Analytics

19%
Claim costs lower than industry.

Safety Training

Narcotics Program Pharmacy Program



22%
Mod Reduction

Our Commitment and Expertise

Our goal is superior claims management, underwriting expertise and value-added services designed to reduce costs for policyholders. Our industry-leading services, such as our narcotics and pharmacy programs, and Care Analytics program — which helps us identify local physicians who understand work-related injuries and provide superior care to get injured employees back to work — have resulted in **claim costs that are 19% below the industry**. What does this mean to you? Better care for your employees and lower premiums for your bottom line.

Creating Efficiencies

We offer a unique pay-as-you-go solution that bases premium on actual payrolls (rather than estimates) and allows for convenient online payments. Our website offers a complete library of resources — including workplace safety training and videos, safety tip sheets and guidebooks, claims information and fraud information — at no cost to you.

Our Team of Experts

We pride ourselves on providing exceptional service. That's why we staff our own team of experts instead of using vendors and we have a local presence (not a phone number) in our core states. Our goal is to provide appropriate care to injured workers while reducing claims costs for our customers.

- **Loss Control Consultants** – With workplace safety as their number one goal, our consultants provide personal, unrivaled safety services and support to policyholders.
- **Internal Nurse Case Managers** – Our nurse case managers work closely with injured workers, employers, physicians and claims handlers throughout the entire claim process to ensure the worker receives the best care while assisting in early return to work which helps to reduce claim costs.
- **Corporate Medical Director** – Our in-house medical director provides guidance and strategic direction on a wide range of medical management and cost containment initiatives, with a special focus on improving the quality of care for injured workers.
- **TeleCompCare** – This 24/7 nurse triage hotline provides injured workers with access to quick medical assessments, referral to medical care when appropriate and a convenient option to connect with an occupational physician via live video conference.
- **Pharmacist** – Our staff pharmacist works closely with our claims team to recommend changes to medications and identifies inappropriate dispensing to help avoid opioid addiction and prolonged recovery times.
- **Investigative Services Unit** – With billions of dollars lost in the industry each year to insurance fraud, our team of former law enforcement professionals partner with our claims team to investigate and expose potential fraud.
- **Premium Audit** – Our auditors are the best in the business, working with customers to verify payroll and class codes to ensure accurate premiums.
- **Claim Handlers** – Seasoned claim professionals located in the field who understand their local legal and medical environment – and can guide the injured worker through the recovery process.
- **Medical Bill Review** – This team collects all injured worker bills to review for accuracy.

Protecting Your Employees – And Your Bottom Line

By proactively caring for injured workers and helping business owners improve workplace safety, we have successfully lowered experience mods, and therefore reduced costs, for our customers. An average mod beginning at 1.30 when written with **Accident Fund is reduced by 22%** to 1.0 by its third year – and to a credit mod of .99 by the fourth year. Two-thirds of accounts that stay with us to the fourth year achieve a credit mod.



Accident Fund Insurance Company of America is a member of AF Group. Insurance policies may be issued by any of the following companies within AF Group: Accident Fund Insurance Company of America, Accident Fund National Insurance Company, Accident Fund General Insurance Company, United Wisconsin Insurance Company, Third Coast Insurance Company or CompWest Insurance Company.



HUB International Midwest Ltd.

WORKERS' COMPENSATION RENEWAL

To: SHEBOYGAN WATER UTILITY
From: Accident Fund Ins Co Of America
Agency: HUB International Midwest Ltd.
Agency Code: 0005043
Agency Contact:
Date: Monday, November 16, 2020
Insured: SHEBOYGAN WATER UTILITY
Quote Id: 5003458-19
City/State: SHEBOYGAN, WI
FEIN/SSN: 396005601
Renewal Effective Date: 01/01/2021
Renewal Expiration Date: 01/01/2022

ACCIDENT FUND INS CO OF AMERICA is pleased to present your renewal quote for Workers Compensation Insurance coverage in the state of WI.

Premium: \$35,421.00
Minimum Premium: \$893.00
Dividend Plan: DIVIDEND TABLE 35% FLAT
Payment Plan: Bill Other - 10 Pay (Deposit 10%)

Employers' Liability

Each Accident \$100,000.00
Disease - Policy Limit \$500,000.00
Disease - Each Employee \$100,000.00

Installment Schedule

Table with 4 columns: Installment #, Date Due, Installments, Amount(\$). Rows 1-10 showing monthly installments of \$3,542.10.

Total Installments \$35,421.00

Coverage

Table with 7 columns: State, Location, Class Code, Class Description, Premium Basis, Rate per \$100/Factor, Est. Annual Premium. Lists various coverage classes like WATERWORKS OPERATION & DRIVERS, CLERICAL OFFICE EMPLOYEES NOC, CATASTROPHE, etc.

Subtotal	(\$15,380.00)
Total for Location	\$35,421.00
Total State Premium	\$35,421.00
Total For Policy	\$35,421.00

The quotation requested should be considered an estimate and is subject to change based on changes in rates or any other item by jurisdictions that have control over such items. The quote is valid until the effective date of the renewal 01/01/2021.